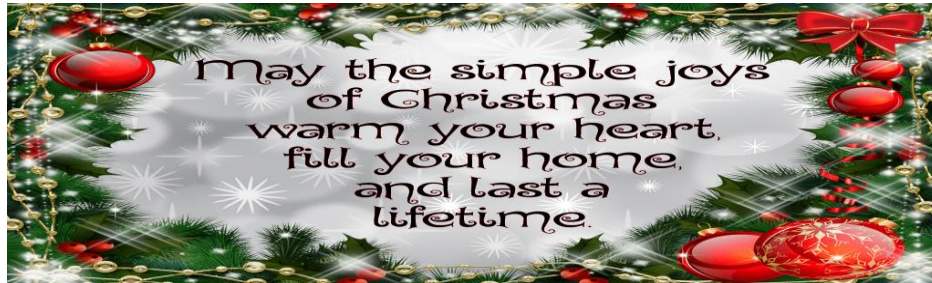




The Chesapeake City Ecumenical Association, Inc. (CCEA)
Registered 501(c)3
Federal ID 54-197-6190
P. O. Box 244
Chesapeake City, MD 21915



Dear Readers:

Christmas is only 4 weeks away! In my lifetime, I cannot remember a stranger year-one that I hoped would pass and yet, one that gave me more time to reflect than I might otherwise have taken.

Most of our volunteer team has been sent to the side-lines because of COVID. They have prayed for us; advocated for The CCEA ministries; worked from home when possible. A few have continued to keep our social media connections current; developed new ways to connect the children or the public with our ministries and helped to keep our Board connected for meetings. Each week a dedicated core team has passed through our doors to receive food; stock our shelves & freezers; pre-pack pantry boxes for distribution; and deliver pantry boxes thru our “knock/drop” service. Our Clothing/Home Pantry Team, affectionately referred to as the “Dungeon Queens”, have worked to re-open for our guests; keep the stock current and rotated; packed and repurposed stock to other agencies and all with a smile! And because our volunteers are foundation on which we are able to operate, we have searched new ways to recognize them: The Webbs being recognized thru AARP and Don Koss thru the “Essential Workers” drawing with the Cecil Whig! Every volunteer is a treasure and we truly know your worth not only to us, but to those you serve!

Our donors have provided some of the strongest support any one agency could ask for. Every Monday donors are pulling into our lot with deliveries for the food pantry, and always asking what more do we need before they leave. Others donors are adjusting to how we must now operate to receive goods for the Clothing/Home Pantry. We remind all our donors: Check our web-site at www.ccea4u.com or our face book page for the most up to date information on our needs and our schedule for accepting donations. Since both are subject to change frequently, please be sure to check at least once a week to ensure nothing has changed since your last visit.

Our member churches have seen the highest rate of change in pastoral leadership that I can recall since I began serving in 2003. We have welcomed new pastors at Bethel and Ebenezer AME churches; The Chesapeake City UMC (Trinity/Town Point United Methodist Charge) and the past for St. Peter Anglican church retired in mid-September. Still our member churches continue to participate, pray for and support The Chesapeake City Ecumenical Association. To say we are blessed in an understatement.

We cannot forget our County Services Team-Krista, Stephanie, Jonathan-who have kept us in the loop and re-envisioned how to keep their partnership with us active under in the strange world of COVID!

The Generation Station has endured a series of set-backs from issues within our location to being able to open due to COVID. We are in need of volunteers and staffing (check further in this month's newsletter for opportunities related to GS). Still we are thankful to be planning and prayerful for reopening as 2021 approaches.

Yes 2020 has been perhaps the strangest year of my "young" life! But, with all the strange came wonderful blessings. The opportunity to work more closely with some of our volunteers; to bring new volunteers into service with us; to expand my educational horizons, which at this point in life is a blessings and a challenge; and to work with our board as we re-envision how we serve in this "new world".

What I never doubt is that we serve an amazing GOD, who will take us to the destination HE has planned and give us the tools and people we need to continue HIS work in this community. I invite every reader to join us as we move into 2021 and I thank every volunteer, supporter and guest who remained with us through the ups/downs of 2020.

Be safe in your travels, gentle in your words and very blessed in the Christmas season before us and in whatever 2021 brings!
Deborah Forsythe
President



OUR CLOTHING & HOME PANTRY IS OPEN TO THE PUBLIC

We invite every reader to visit our clothing and home pantry. If you like to visit new/used shops, looking for something unique; nice clothing at great prices (is free great enough??)-our clothing & home pantry is worth visiting. **Open the first thru third Tuesdays from 9:00a-11:30a**, we offer a range of clothing, home goods and unique finds! COVID protocols are required which means your temperature will be taken at the door (no entry for any recording of 100 degrees or higher); mask is required (we have them if you don't); hand sanitizer to be used before you enter the "shopping" areas (provided at the entry table). Only 2 "shoppers" at a time. We have a 15 item limit (under free)-then each item is \$1.00 and a 15 minute "shopping time" limit per guest.

Located in the lower level of The CCEA Complex building. You may park along the church side of the parking lot OR in the over-flow lot directly across the street (looks like a field)..

Donation acceptance schedule

Donors are asked to use this schedule when determining what we will be accepting on the published dates. Because of limited display and storage space, we will reserve the right to inspect and reject (which is done at your vehicle before we take possession) and we greatly appreciate your consideration and cooperation.

DONOR DAY December 29th (9:00-11:30a) **Children's Winter Clothing ONLY**
The Clothing & Home Pantry will be CLOSED to guests from December 22nd thru the end of 2020. We look forward to your return on the first thru 3rd Tuesdays of January and beyond. Please come back to see us between the hours of 9:00a-11:30a!

December Schedule for Food & Clothing/Home Pantries

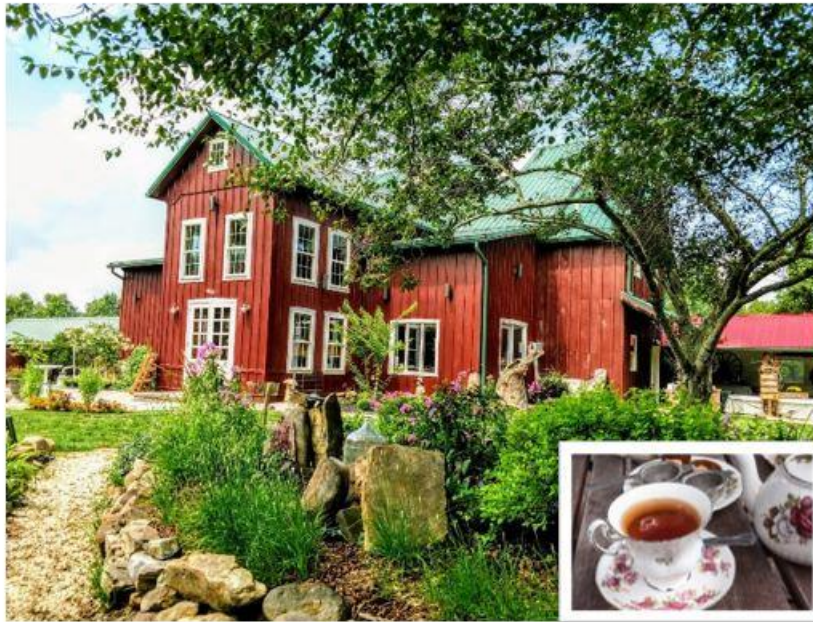
(It is the client's responsibility to call on Thursday or Friday PRIOR to schedule pick up of their food pantry boxes before the Christmas Holiday closing)

December Opening Schedule

Tuesday, December 01
Tuesday, December 08
Tuesday, December 15

Guests may call on December 17th or December 18th (410-885-3244) between the hours of 9:00a to Noon to schedule your appointment for Tuesday, December 29th. Please remember it must be at least 30 days from your last visit!

*Country Friendship Tea at the Barn
In a beautiful country setting!*



*Join the CCEA for an afternoon Tea/Punch!
Sunday, May 23, 1 pm at Sinking Springs Herb Farm
843 Elk Forest Rd, Elkton, MD 21921
\$25 per person adult, \$15 children under 12, Free for children under 4
Bring your favorite Tea Cup.... - Bring your favorite Hat....
Call 410-885-3244 for information.
Tickets will be available on March 1st at the following locations:
Purchase tickets at **Café on the Bay** @ 19 Bohemia Avenue, 21915
ICA Consulting, 2615 Augustine Herman Hwy 21915 or
Good as New Shop @ 213 North Street, Elkton, MD 21921 or
through your **CCEA Church representative**.
Benefits the Generation Station.*

E-Mail: outreach@ccea4u.com Phone: 410-885-3244 Web: www.ccea4u.com

Many of you see the announcement for Redner's each month. With most of our churches currently closed to weekly worship, the receipts being turned in has decreased. On average these receipts produce an additional \$1000.00 a year in funding to the Food Pantry. In times when food donations are down, the additional funding enables us to purchase the most needed items. You Render tapes may be mailed via The CCEA at PO Box 244, Chesapeake City, MD 21915; if you are in the vicinity of the Complex at 227 Basil Avenue, Chesapeake City, volunteers are typically there on Mondays and Tuesdays from 9:00 a to 11:30a and you are welcome to drop them off in person. **As noted in the announcement you must use your Rewards Card at the register and tapes may not be altered in any way (please do not cut; mark up, etc.) and the date of the tape must be within the last 12 months (we highly recommend 9 months or less to ensure they are still good by the time we receive and process them).** The simple act of using your card, saving your tapes and sending them in makes more difference than you realize when the tapes are added to the others received.



Dear Redner Receipts participants,

Following these guidelines can help ensure that your organization (CCEA) will receive their checks in a timely manner.

- **Customer must use their Pump Perks/1% Save-A-Tape card for purchase. This will be noted on the bottom of the receipt.**
- **Please submit the whole receipt. Partial receipts will not be considered.**
- **Please do not use a highlighter marker on your receipts, it can erase the totals.**
- **All receipts must be dated within one year prior to the date of submission.**
- **Receipts from fuel purchases at Redner's Quick Shoppes are not considered.**

Money earned through this program helps to fund the CCEA food pantry in purchasing perishable and non-perishable food.



Placing a call for donations is never an easy task. Organization such as The Chesapeake City Ecumenical Association rely on the donations from private donors and the continued support of business to keep our ministries in service.

Donors have been generous to our Food Pantry. Remarkably, some donors have only found us in the months of COVID and have become partners helping to keep our shelves stocked and enabling us to feed not only our guests; but to help provide staples to Generation Station and to create new feeding ministries.

Financial donations, however, reflect a steady decline. This is cause for both prayer and concern as we continue to move forward. The State of Maryland has announced the moratorium for shutting off utilities has been lifted. Shut-off notices can be issued, with a required period for negotiating payment plans, but, by late November some residents in our area may be facing utility shut offs and others will be trying to not only keep the electric on, but fuel up for heating season. I will share with you that we have many responsible clients who used the stimulus checks to pay on their utilities or to keep their rent current. They used the extra monies received during the stimulus in unemployment benefits to do the same, or to purchase groceries and not draw on the food pantry.

The reality is, that those who received the additional unemployment benefits, will be responsible for taxes on those benefits in the coming year. The projected impact can be enourmous and the financial impact will create a new wave of financial woes.

We have made every effort to be “good stewards” of the funds received. Over these months our expenses have been minimized, in part because of the COVID restrictions in place; and, in part because our volunteers have been diligent when at the center to minimize the use of utilities. But ultimately, we do have overhead expenses relating wholly to the operation of our building and the ministries.

If you are able, financial donations will ensure both our continued operations and our ability to aid those who may face a range of issues in the ensuing months. You can do this by going on-line at www.ccea4u.com. Once on the homepage locate the donate button on the left side of the screen and follow the instructions. If you prefer, like myself and perhaps a bit old-school, you can write a check to The CCEA and mail it to PO Box 244, Chesapeake City, MD 21921.

All donations are tax deductible. Where cash donations, food donations and other goods donations are given, please be sure to provide your name, address, telephone number and current e-mail address. The majority of tax statements are sent via e-mail. Paper statements are issued and mailed upon request only.

We thank you for your support!

Employment Opportunity

Generation Station Program Assistant Needed

The Generation Station is hiring a part-time program assistant to work from 2:00-6:00pm, Monday-Thursday on days when public school is in session. The successful candidate will put the needs of our students first, as well as serve as a caring adult role model.

Specific duties include:

- Assist students with daily homework and virtual learning assignments.
- Maintain a safe and clean environment.
- Assure that students follow all COVID safety protocols.
- Drive a 14-passenger van to transport students, if needed.
- Lift up to 25 lbs., when required.

This is a part-time position without benefits. Hourly rate is \$11.00/hour.

Interested candidates should contact Anita Collings at (410) 441-1443 or anitakc416@gmail.com.

