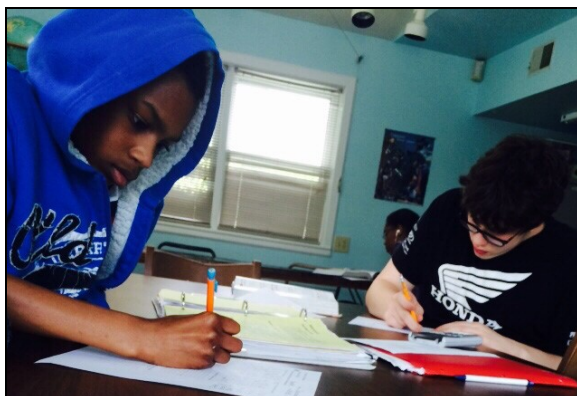


**A Place to Be...**

**Safe  
Respectful  
Cooperative**

**...Plugged In**



## **Registration**

Parent packets are available at Bohemia Manor Middle and High Schools, online at [ccea4u.com](http://ccea4u.com) or at the Generation Station. Forms must be completed prior to program attendance.

The Generation Station Out-of-School Program does not discriminate on the basis of race, color, sex, national origin, religion, disability, or sexual orientation in providing access to it's programs.



**Enriching the lives  
of people in  
the Community**

**Out of School  
Program  
Monday-Thursday  
2:45-5:30pm**

Program resumes  
**Tuesday, September 5**

(410) 885-5973  
[gsycspirit@netzero.com](mailto:gsycspirit@netzero.com)

**Generation Station  
1 Randalia Road  
Chesapeake City, MD 21915**

Chesapeake City Ecumenical Association  
[www.ccea4u.com](http://www.ccea4u.com)

# Who we are

The Generation Station is an Out-of-School Program for students in grades six through nine. We provide a safe environment between the hours of 2:45 and 5:30 pm when most parents are still working. Studies show that, left unsupervised during these hours, students are more likely to engage in at-risk behaviors. Each program day includes both homework and instructional time aimed at promoting physical, emotional and academic wellness. A healthy snack is provided.

## A Program for Younger Siblings

The Generation Station offers a separate on-site elementary school program that is open to families that have students enrolled in it's middle/high school program.

Call today for more information.



# Cost

We offer the out-of-school program at no cost to the students or parents.

The Generation Station is a ministry of the Chesapeake City Ecumenical Association and is funded through a partnership with the Cecil County Local Management Board. Additional funding comes from the United Way of Cecil County and the generous support of individuals, churches, businesses and community organizations. Your tax deductible donation can help us to keep the program available to all students.

# Transportation

Students are picked up at school at dismissal time and transportation home is provided at the end of the program day.

